

# Swing/Pull Clamp - Manifold Mount - Lower Flange Style - 750 lbs.

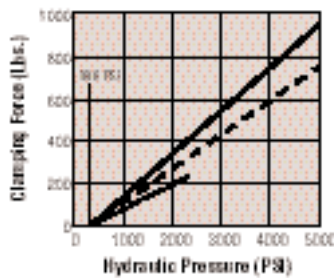
110056



## Features

- Manifold design eliminates external plumbing and reduces fixture height
- "Live Roller" design provides industry's most reliable swing/pull mechanism
  - o Piston/Cam combination provides solid path for clamping action
  - o Typical ball and groove mechanism has higher potential for clogging and for damage from mis-aligned work pieces
- Available in single and double acting versions
- Special rod wiper seal protects internal clamp components
- Unique drainage system channels

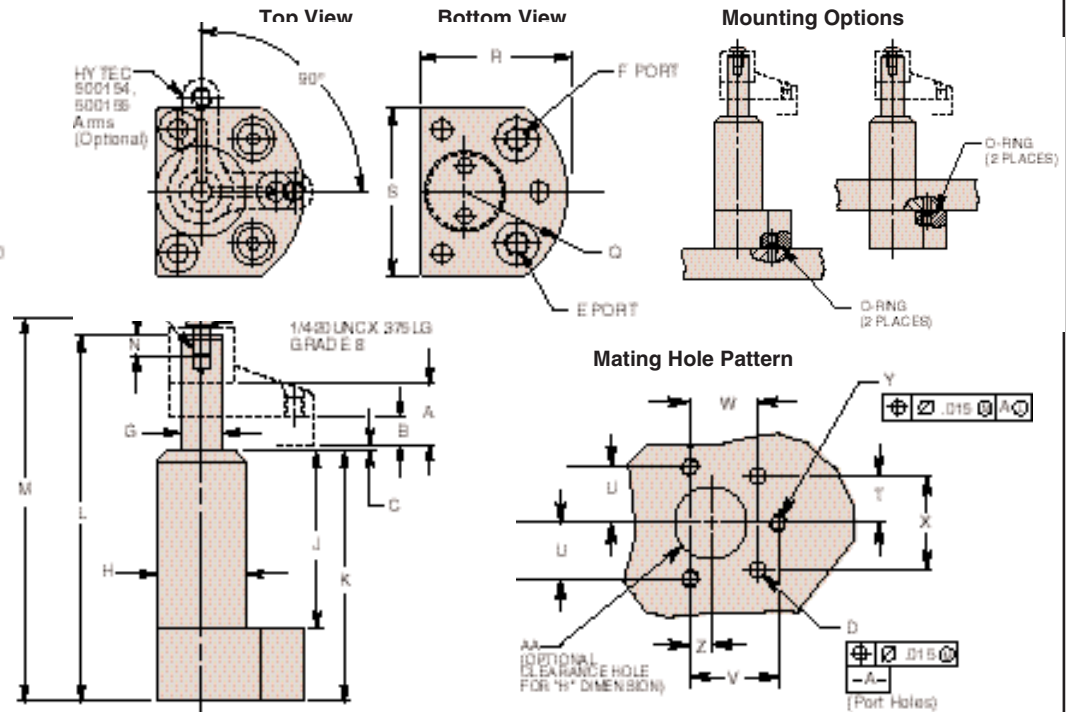
- contaminants away from clamp
- Corrosion resistant construction
- Heat treated, chrome plated piston rod
- Manifold mountable
- Unique "Live Roller" swing mechanism for increased service life
- Power-Tech® treated body and hardened cam for long wear and corrosion resistance
- Single-acting and double-acting models are dimensionally interchangeable
- Straight pull capacity 950 lbs. at 5,000 psi max.
- Flange top or bottom mounting



## Performance

Clamp Nos. 110053, 110054, 110055, 110056, 110057, 110058

- Web Hylac 50 D155 Arms (14.25' long)
- - - Web Hylac 50 D154 Arms (11.25' long)
- Straight Pull



Cat. No.	Specifications							Dimensions (In Inches)							
	Oper.	Swing Direction	*Force (Lbs.)	Eff. Area (Sq. In.)		Oil Cap. (Cu. In.)		A Total Stroke	B Clamping Stroke	C	†††D Port Dia.	E Clamp Port	F Unclamp Port	††G Dia.	H Dia.
				Clamp	Unclamp	Clamp	Unclamp								
110056	Single-Acting	LH (Counterclockwise)	750	.195	—	.160	—	.818	.345	.108	.309 Max.	SAE O-Ring	†Vent	.560	1.210
110057		RH (Clockwise)													
110058		Straight Pull													
110053	Double-Acting	LH (Counterclockwise)	750	.195	.441	.160	.360	.818	.345	.108	.309 Max.	SAE O-Ring	†Vent	.560	1.210
110054		RH (Clockwise)													
110055		Straight Pull													

Cat. No.	Dimensions (In Inches)																
	J	K	L	M	N Thread Min.	P Thread Size	Q Radius	R	S	T	U	V	W	X	Y Thread Size	Z	AA Dia.
110056	2.379	3.359	4.912	5.138	.275	1/4-20 UNC	1.375	1.995	2.250	.696	.827	1.306	1.002	1.392	1/4-20 UNC	.306	1.235 1.255
110057																	
110058																	
110053																	
110054																	
110055																	

NOTE: \* With 1.25" long arm at 5,000 psi maximum operating pressure.  
† Do not pressurize - single-acting only.

†† See page 59 for custom arm mounting. Internal cam may be removed for an unguided straight pull. See page 58 for maximum operating speeds.

††† Surface finish to be 63. Finish of 125 acceptable with concentric tool marks only. Finish area to be .525 DIA. min. centered on .309 DIA. port hole. See operating instructions for additional port details.