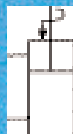


Swing/Pull Clamp - Manifold Mount - Lower Flange Style - 365 lbs.

Swing/Pull Clamp - Manifold Mount - Lower Flange Style - 365 lbs.

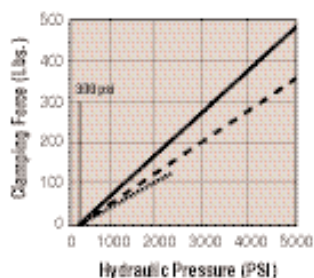
110144



Features

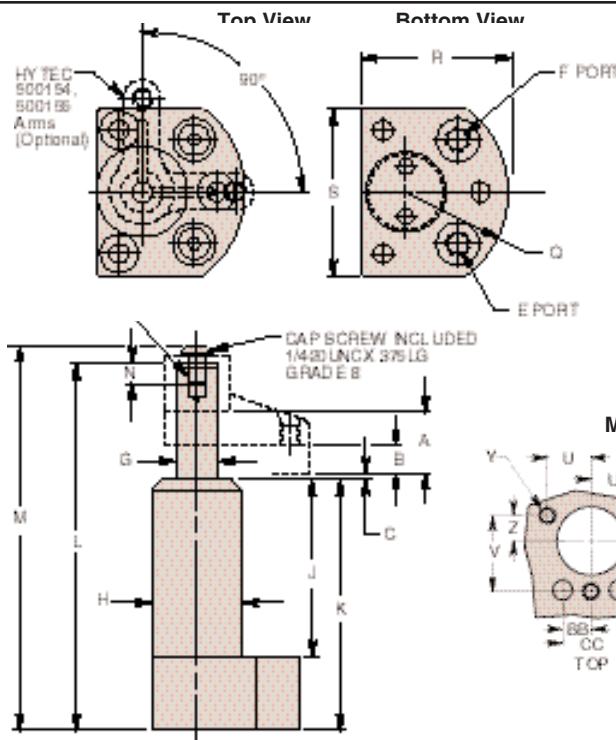
- Manifold design eliminates external plumbing and reduces fixture height
- "Live Roller" design provides industry's most reliable swing/pull mechanism
 - Piston/Cam combination provides solid path for clamping action
 - Typical ball and groove mechanism has higher potential for clogging and for damage from mis-aligned work pieces
- Available in single and double acting versions
- Special rod wiper seal protects internal clamp components
- Unique drainage system channels

- contaminants away from clamp
- Corrosion resistant construction
- Heat treated, chrome plated piston rod
- Manifold mountable
- Unique "Live Roller" swing mechanism for increased service life
- Power-Tech® treated body and hardened cam for long wear and corrosion resistance
- Single-acting and double-acting models are dimensionally interchangeable
- Straight pull capacity 480 lbs. at 5,000 psi max.
- Flange top or bottom mounting

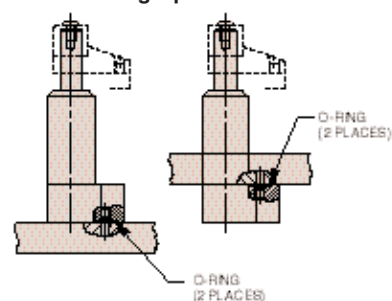


Performance

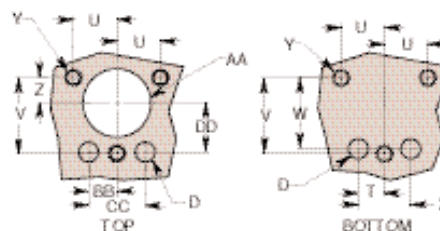
- With Hytec No. 500166 (3.25" long)
- With Hytec No. 500167 (1.05" long)
- Straight Pull



Mounting Options



Mating Hole Pattern



Cat. No.	Specifications							Dimensions (In Inches)								
	Oper.	Swing Direction	*Force (Lbs.)	Eff. Area (Sq. In.)		Oil Cap. (Cu. In.)		A Total Stroke	B Clamping Stroke	C	†††D Port Dia.	E Clamp Port	F Unclamp Port	††G Dia.	H Dia.	
				Clamp	Unclamp	Clamp	Unclamp									
110144	Single-Acting	LH (Counterclockwise)	365	.098	—	.065	.638	.320	.096	.309 Max.	5/16-24 UNF SAE-2	Breather Plug †5/16-24 UNF SAE-2	.435	1.070		
110145		RH (Clockwise)													.248	.163
110146		Straight Pull														
110147	Double-Acting	LH (Counterclockwise)			.248											
110148		RH (Clockwise)														
110149		Straight Pull														

Cat. No.	Dimensions (In Inches)																			
	J	K	L	M	N Thread Min.	P Thread Size	Q Radius	R	S	T	U	V	W	X	Y Thread Size	Z	AA Dia.	BB	CC	DD
110144	1.800	2.780	4.045	4.302	.275	1/8-20 UNC	1.250	1.870	1.770	.412	.684	1.185	1.110	.824	10-24 UNC	.395	1.095 1.125	.445	.890	.770
110145																				
110146																				
110147																				
110148																				
110149																				

NOTE: * With 1.00" long arm at 5,000 psi maximum operating pressure.
 † Do not pressurize - single-acting only.
 †† See page 59 of H05 for custom arm mounting. Internal cam may be removed for an unguided straight pull. See page 58 of H05 for maximum operating speeds.

††† Surface finish to be 63. Finish of 125 acceptable with concentric tool marks only. Finish area to be .525 DIA. min. centered on .309 DIA. port hole. See operating instructions for additional port details.