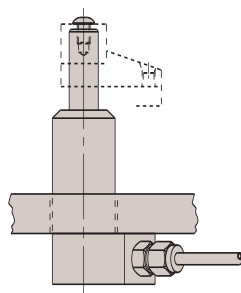
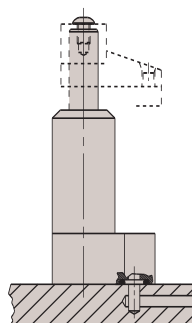


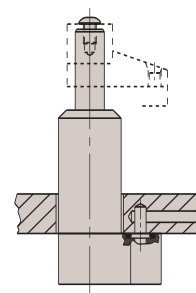
Hytec swing clamps are available in numerous mounting and porting configurations. Here are just a few examples of ways to include these clamps into your fixture designs.



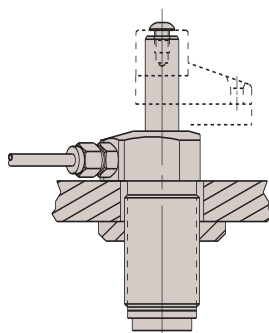
**Lower Flange
Conventional Plumb**



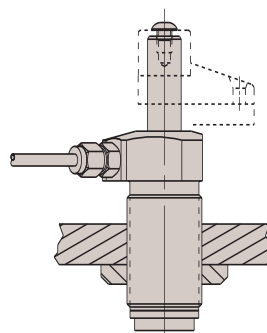
**Lower Flange
Manifold Mount**



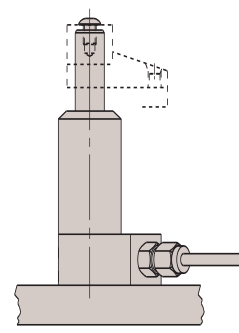
**Lower Flange
Manifold Mount**



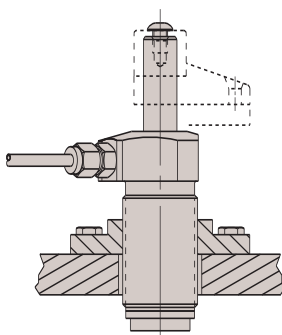
**Threaded Body
with Jam Nut**



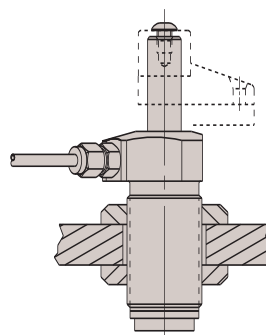
**Threaded Body
with Jam Nut**



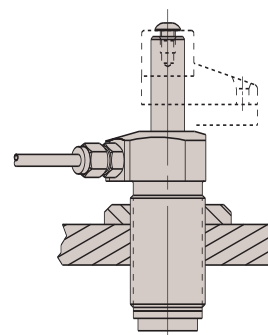
**Lower Flange
Conventional Plumb**



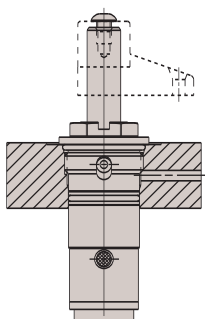
**Threaded Body
With Mounting Bracket**



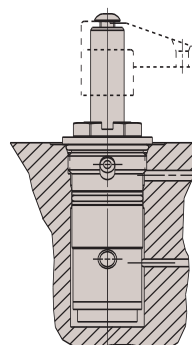
**Threaded Body
With Jam Nut**



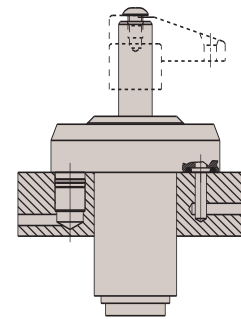
**Threaded Body
With Jam Nut**



**Cartridge Style
Single Acting**



**Cartridge Style
Double Acting**



**Upper Flange
Double Acting**