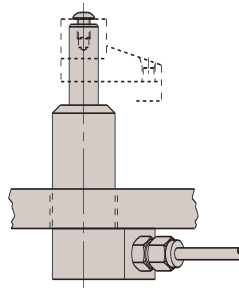
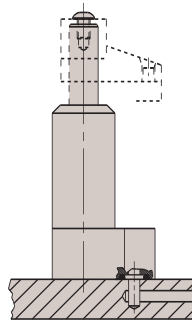


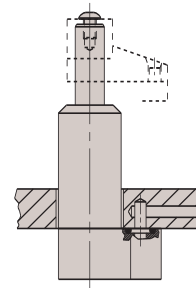
**Hytec swing clamps are available in numerous mounting and porting configurations. Here are just a few examples of ways to include these clamps into your fixture designs.**



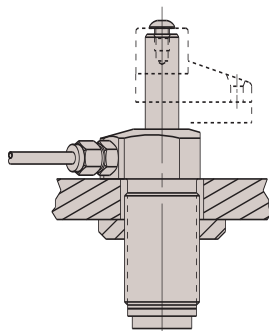
**Lower Flange  
Conventional Plumb**



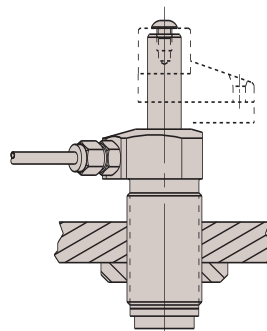
**Lower Flange  
Manifold Mount**



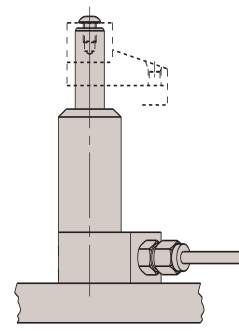
**Lower Flange  
Manifold Mount**



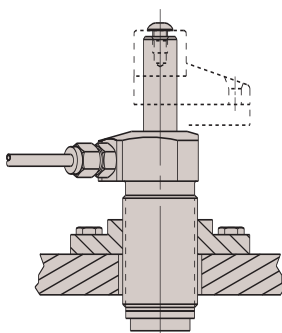
**Threaded Body  
with Jam Nut**



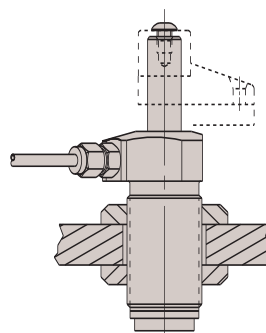
**Threaded Body  
with Jam Nut**



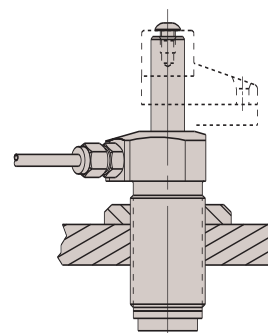
**Lower Flange  
Conventional Plumb**



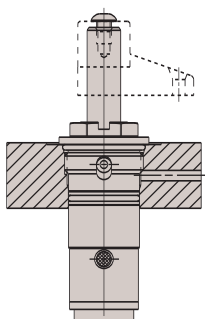
**Threaded Body  
With Mounting Bracket**



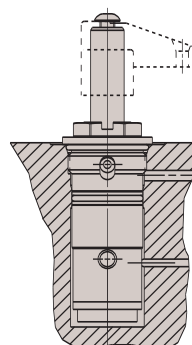
**Threaded Body  
With Jam Nut**



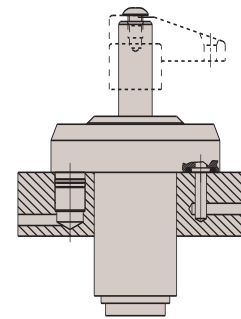
**Threaded Body  
With Jam Nut**



**Cartridge Style  
Single Acting**



**Cartridge Style  
Double Acting**



**Upper Flange  
Double Acting**