

Swing/Pull Clamps - Cartridge Style - 750 lbs.

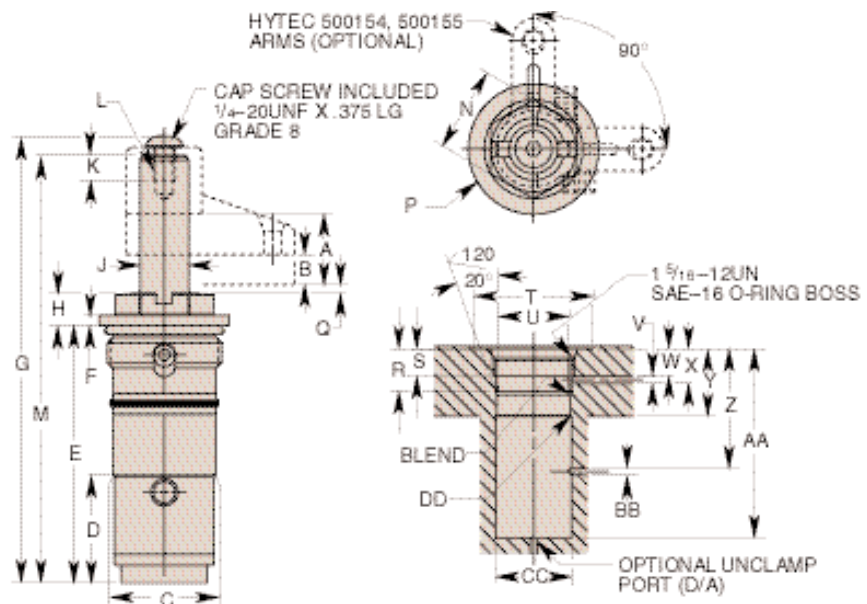
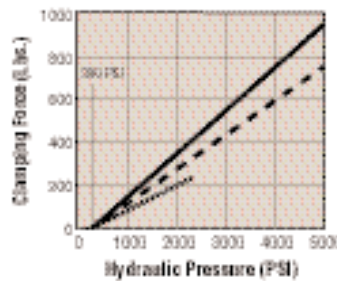
100951



Features:

- Small footprint minimizes acreage on fixture
- Low profile reduces overall fixture height
- Manifold mounting eliminates exposed plumbing, reducing chip build-up on fixture
- "Live Roller" design provides industry's most reliable swing/pull mechanism
 - o Piston/Cam combination provides solid path for clamping action
 - o Typical ball and groove mechanism has higher potential for clogging and for damage from mis-aligned work pieces
- Simple cavity design enables faster fixture building
- Available in single and double acting versions

- Special rod wiper seal protects internal clamp components
- Unique drainage system channels contaminants away from clamp
- Corrosion resistant construction
- Heat treated, chrome plated piston rod
- Manifold mountable
- Unique "Live Roller" swing mechanism for increased service life
- Power-Tech™ treated body and hardened cam for long wear and corrosion resistance
- Single and double-acting models are dimensionally interchangeable.
- Straight pull capacity 950 lbs. at 5,000 psi maximum



| Cat. No. | Oper. | Specifications | | | | | | Dimensions (In Inches) | | | | | | | | |
|----------|---------------|-------------------------------|---------------|---------------------|---------|--------------------|---------|------------------------|-------------------|--------|-------|-------|------|-------|------|----------|
| | | Swing Direction | *Force (Lbs.) | Eff. Area (Sq. In.) | | Oil Cap. (Cu. In.) | | A Total Stroke | B Clamping Stroke | C Dia. | D | E | F | G | H | ††J Dia. |
| | | | | Clamp | Unclamp | Clamp | Unclamp | | | | | | | | | |
| 100951 | Single-Acting | Left Hand (Counter Clockwise) | 750 | .195 | — | .160 | — | .818 | .345 | 1.185 | 1.245 | 2.956 | .125 | 5.139 | .371 | .560 |
| 100952 | | Right Hand (Clockwise) | | | | | | | | | | | | | | |
| 100953 | | Straight Pull | | | | | | | | | | | | | | |
| 100957 | Double-Acting | Left Hand (Counter Clockwise) | | | .441 | .360 | | | | | | | | | | |
| 100958 | | Right Hand (Clockwise) | | | | | | | | | | | | | | |
| 100959 | | Straight Pull | | | | | | | | | | | | | | |

| Cat. No. | Dimensions (In Inches) | | | | | | | | | | | | | | | | | | |
|----------|------------------------|---------------|-------|--------|--------|------|--------------|---------------|-------------|----------------|------------------------|--------|--------|--------|----------------|---------|---------------------------|--------------|-----------------|
| | K Min. Thread | L Thread Size | M | N Hex. | P Dia. | Q | R | S Min. Thread | T Dia. Min. | U Dia. | V Clamp Port Dia. Min. | W Min. | X Max. | Y Min. | Z Min. | AA Min. | BB Unclamp Port Dia. Min. | CC Dia. Min. | DD Chamfer Max. |
| 100951 | .275 | ¼–20UNC | 4.912 | 1.000 | 1.500 | .108 | .665 .695 | .430 | 1.560 | 1.187 1.190 | .125 | .430 | .604 | 1.063 | – 1.912 | 3.044 | †Vent .125 | 1.187 | .020 |
| 100952 | | | | | | | | | | | | | | | | | | | |
| 100953 | | | | | | | | | | | | | | | | | | | |
| 100957 | | | | | | | | | | | | | | | | | | | |
| 100958 | | | | | | | | | | | | | | | | | | | |
| 100959 | | | | | | | | | | | | | | | | | | | |

Note: * With 1.25" long arm at 5,000 psi max. operating pressure.
 † Do not pressurize - single-acting only. Cavity must be vented.
 †† See page 59 for custom arm mounting.
 Internal cam may be removed for an unguided straight pull. See operating instructions for additional port details.
 See page 58 for maximum operating speeds.