

# Spring Adv. Work Supports-2,100 lb. Cap.



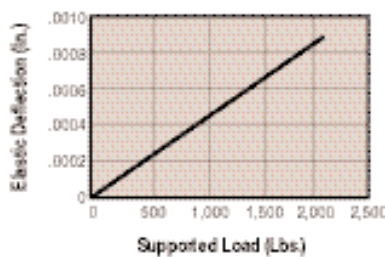
Work supports provide the stability that prevents deflection and vibration of the workpiece during machining. Automatically adjustable to varying sizes or positions of the workpieces, they are also usable as adjustable rest pads under clamps.

These 2,100 lb. work supports are available in three different spring advanced models with either conventional or manifold mounting. All use plunger seals to protect against contamination. The spring advance models use Hytec's diaphragm breather system.

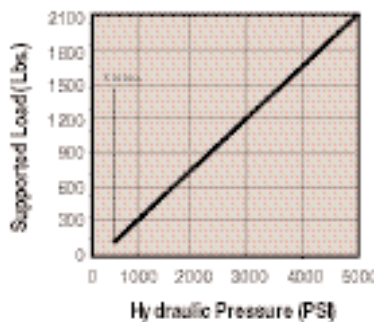
The block style design requires only a flat surface for mounting rather than the large threaded hole necessary with threaded body designs.

## Features:

- Spring advance models
- 2,100 lb. rated capacity at 5,000 psi max.
- Single-acting
- Manifold or conventionally mounted styles
- Sealed against contamination

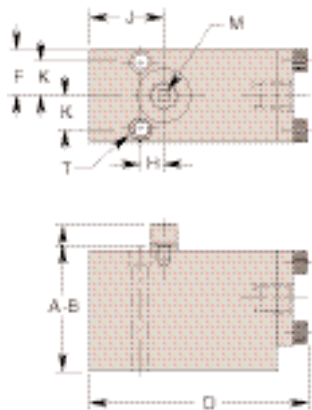


Avg. Performance  
Nos. 100229, 100269

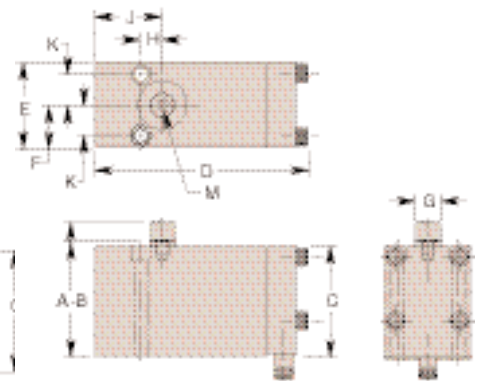


Performance  
Work Support Nos. 100229, 100269

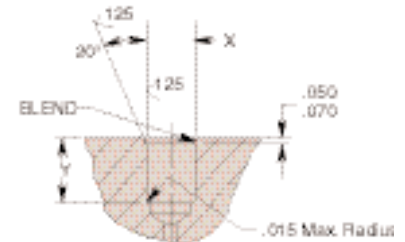
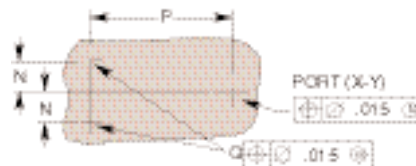
100229, 110085



100269



## Mating Hole Pattern



Cat. No.	Specifications				Dimensions (In Inches)									
	*Cap. (Lbs.)	Oil Cap. (Cu. In.)	Advance System	Mounting Configuration	A Retract Oper. Range	B Advance Oper. Range	C	D	E	F	G Dia.	H	J	K
100229	2,100	.100	Spring	Conventional	2.375	2.750	2.250	4.062	1.750	.875	.500	.438	1.380	.625
100269				Manifold				4.375						

Cat. No.	Dimensions (In Inches)							
	L	M Thread		N Mtng	P Mtng	Q Thread Size	T Dia.	Y
		Size	Depth					
100229	1.375	1/4-20 UNC	.312	—	—	—	.281	1/4 NPTF
110085								3/16-20 UNF SAE-4
100269	—	—	—	.625	2.937	1/4-20 UNC	—	.375 .377

SPRING ADVANCE WORK SUPPORTS			
Cat. No.	Approximate Forces Required to Depress Plunger (Lbs.)		
	Fully Extended	Extended 50%	Fully Depressed
100229 100269	1.0	2.0	3.0