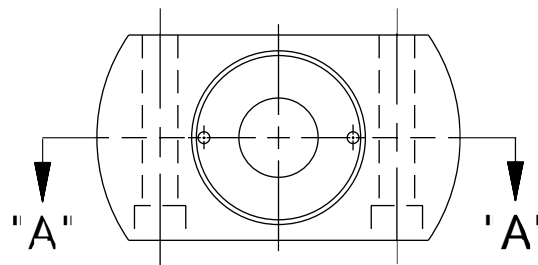
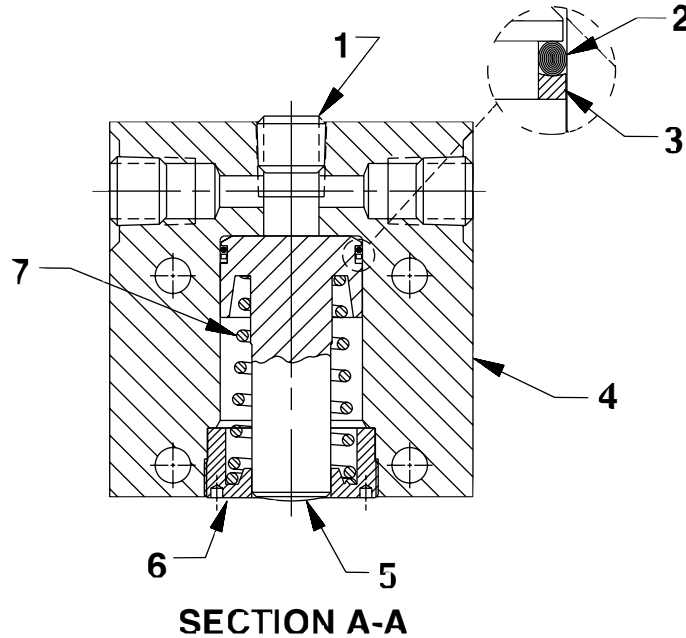


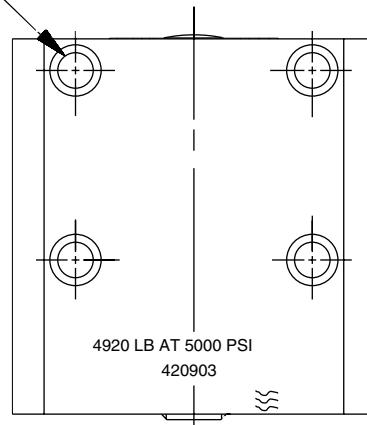
HYDRAULIC CYLINDER

Maximum Capacity: 2.5 Ton at 5,000 PSI

To Parts
List



Mounting Hole For
1/4 Dia Screw



Item No.	Part No.	No. Req'd	Description
1	10479	3	Plug Fitting (1/4 NPTF)
2	*19543	1	O-ring (1-1/8" X 1" X 1/16; Nitrile)
3	*211994	1	Backup Washer (1-1/8" X 1" X 3/64)
4	420905	1	Cylinder Body
5	420906	1	Piston
6	46176	1	Retainer (Torque to 200/250 in. lbs.)
7	251585	1	Compression Spring (1" OD X 2-1/2" Lg.)

Part numbers marked with an asterisk (*) are contained in Repair Kit No. 300454.



Refer to any operating instructions included with this product for detailed information about operation, testing, disassembly, reassembly, and preventive maintenance.

Items found in this parts list have been carefully tested and selected. **Therefore: Use only genuine Power Team replacement parts!**

Additional questions can be directed to our Technical Services Department.