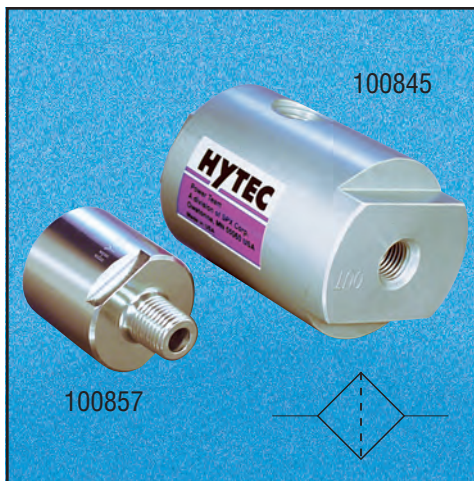


# In-Line Filters



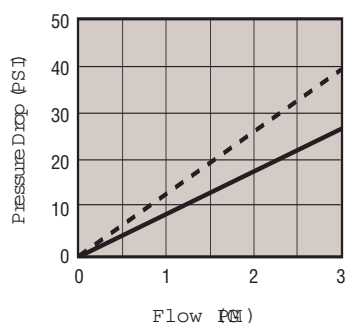
**No. 100845** - This high pressure filter is intended for use in systems where there is flow in only one direction such as pressure or return lines between the power source and control valve. This in-line filter has a removable/replaceable sintered bronze element. The element is accessible without removing the filter body from the installation.

**No. 100857, 100919** - These high pressure, non-bypass, in-line filters are suitable for both unidirectional and bi-directional circuits. This allows the filter to be installed in single acting or double acting circuits downstream from the control valve where the fluid flows in both directions. It's specially reinforced, stainless steel mesh filter element

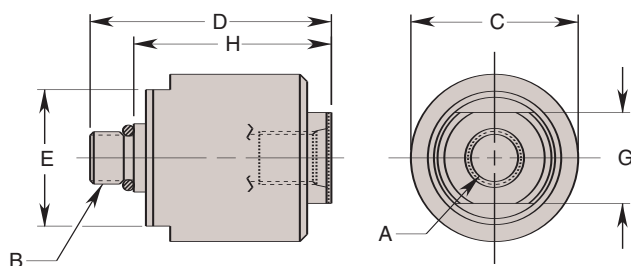
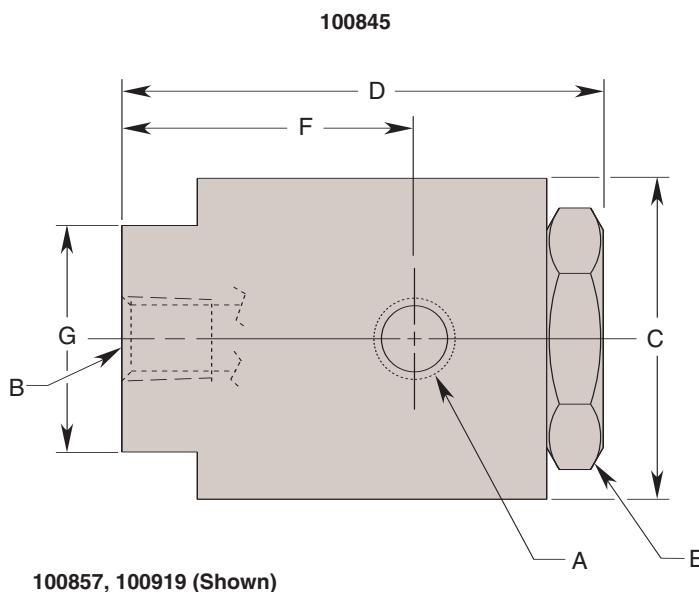
resists fatigue from pressure spikes. Both are ideal for use in pallet coupling circuits to protect components from contaminants introduced at the couplers. The No. 100857 is ideally suited for Hytec's No. 100223 manual pallet valve. Simply remove the coupler from the pallet valve and install this filter between the valve and coupler.

## Features

- 5,000 psi maximum operating pressure
- Low pressure drop
- Removable/replaceable elements



Performance  
 - - - Filter No. 100857, 100919  
 — Filter No. 100845  
 Test Fluid: Hytec Hydraulic Oil  
 @ 100° F (215 SUS)



Cat. No.	Specifications		Dimensions (In Inches)								
	Filtration Nominal/ Absolute	Max. Operating Pressure (PSI)	A Inlet Port	B Outlet Port	C Dia.	D	E		F	G Flats	H
							Hex	Flats			
100845	10/- Micron	—	¼ NPTF	¼ NPTF	2.125	3.188	1.500	—	1.938	1.500	—
100857	10/25 Micron	5,000			1.380	2.100	—	1.125	—	.750	1.630
100919					⅞-20 UNF SAE-4	⅞-20 UNF SAE-4					