

# Accumulators

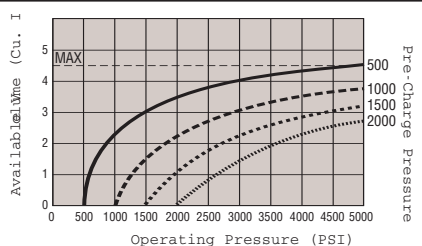


These accumulators are designed to store a small supply of pressurized oil, making them ideal for palletized machining workholding systems or any other system where supply pressure is disconnected temporarily. They are nitrogen charged, piston type accumulators allowing them to be mounted in any orientation. This type of accumulator has a wider operating range at any one charge pressure than any other type of accumulator. Depending on the application, they can be used at any pressure from 0-5,000 psi. Charge pressure is factory set at 1,500 psi and can be increased up to 2,000 psi. In general, a lower charge pressure will provide more total oil but a higher charge pressure will give more usable oil at

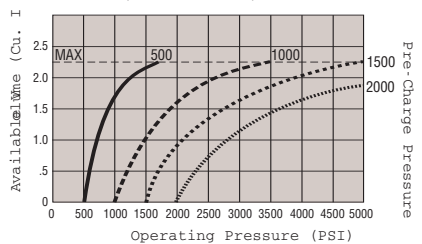
a given allowable pressure drop. Refer to the performance charts to determine the best charge pressure for each application. Accumulators come in two sizes (2 & 5 cu. in.) and are available in conventional mount and the newly introduced manifold mount.

## Features:

- Two sizes: 2 and 5 cu. in.
- Conventional or Manifold Mount
- Precharged to 1,500 psi
- Concealed charging valve
- SAE "O" ring fitting with 1/4" NPT female adapter/restrictor valve (100222, 100138)
- Optional charging tool 500149 (See pg.124)



100983, 100222 Pre-Charge Pressure Curve  
— 500 psi    - - - 1000 psi    ..... 1500 psi (Factory Pre-charge)    - · - · - 2000 psi



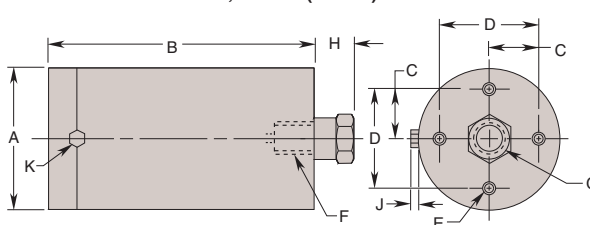
100982, 100138 Pre-Charge Pressure Curve  
— 500 psi    - - - 1000 psi    ..... 1500 psi (Factory Pre-charge)    - · - · - 2000 psi

Cat. No.	Dimensions (In Inches)				
	A	B	C	D Dia.	E
500177	1.125	2.250	2.750	.285	.188

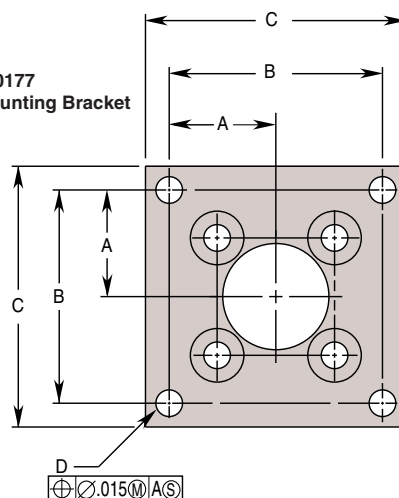
Cat. No.	Specifications		Dimensions (In Inches)										
	Mounting Configuration	Volume (Cu. In.)	A	B	C	D	E Thread		F Thread Size	G Thread Size	H	J	K Hex
							Size	Depth					
100138	Conventional	2	2.500	4.810	.875	1.750	10-32UNF	.200	1/8"-18UNF SAE-6	1/4" NPT	.698	.100	.250
100222		5		5.680									
100982	Manifold	2		4.810									
100983		5		5.680									

Cat. No.	Mounting Option	Dimensions (In Inches)										
		L	M	N	P		R Min.	S Dia.	T Dia. Min.	U	V	W
100982	With 500177	1.125	2.250	1/4"-20UNC	-	-	.375	.625	.188	.050	-	-
100982	Without 500177	.619	1.238	.280	1.120	.183	.193	.563	-	.070	.183	1.120
100983	Without 500177											
100138	Without 500177	.619	1.238	.287	1.150	Thru	-	-	-	-	-	-
100222	Without 500177											

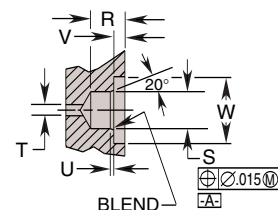
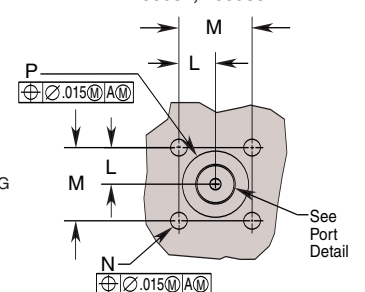
100222, 100138 (shown)



500177 Mounting Bracket



Mating Hole Pattern 100982, 100983



Accumulator Applications