

Control Valve Accessories

100975



100972

100974

Single-station Sub-Plates No. 100972 and 100973

These D03 sub-plates are for use with the 100971 directional control valve and 100974 check valve sub-plate. These assemblies will provide conventionally ported, remote mounted, directional control valves for use in multiple valve systems. These sub-plates may also be used with the 100971 directional control valve only in single valve systems. (For single valve applications, consider using valves 100969 and 100970.) Optional mounting bracket (No. 500175) is available (see p. 95).

Two-Station Manifold No. 100975

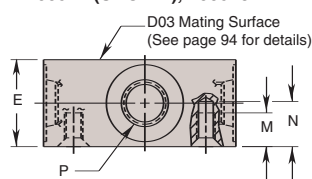
This manifold provides for mounting two, 100971 directional control valves. External plumbing is reduced because both D03

mounting patterns share the same pressure and tank ports. Check valve sub-plate 100974 must also be used in workholding circuits.

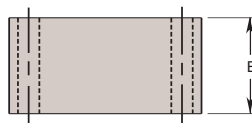
Check Valve Sub-Plate No. 100974

Use this in directional control valve in applications requiring inlet and outlet checks. (Ports P and T) When two or more valves are connected to the same pressure source, these check valves prevent pressure fluctuations in one system from affecting the other. Without this check valve sub-plate, the shifting of one valve in a system can cause the loss of clamping pressure in another. This check valve sub-plate uses the same D03 mounting configuration as our 100971 directional control valve. It is simply placed underneath the valve. Mounting screws are included.

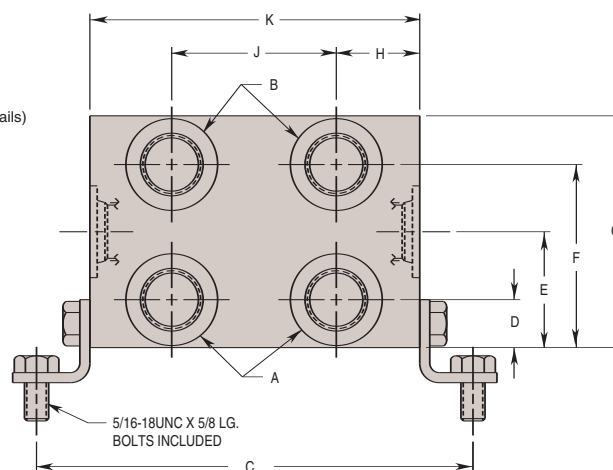
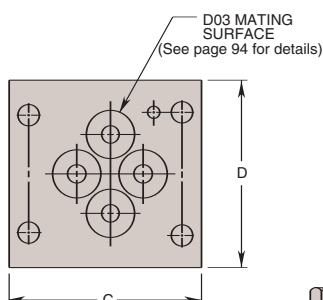
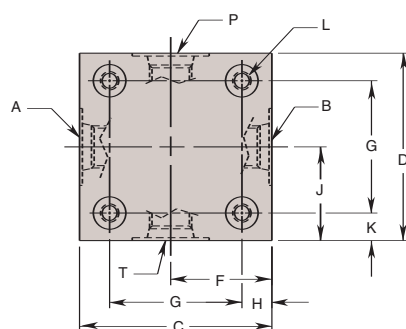
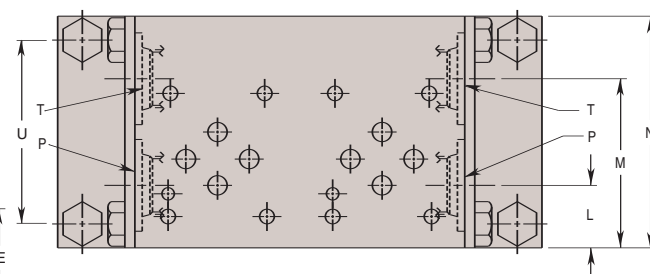
100972 (SHOWN), 100973



100974



100975



Cat. No.	Dimensions (In Inches)														
	"A" Port	"B" Port	C	D	E	F	G Mtng.	H Mtng.	J	K Mtng.	L Thread Size	M Min. Thread	N	"P" Port	"T" Port
100972	1/16-20 UNF SAE-4	1/16-20 UNF SAE-4	2.00	1.948	.904	.947	1.375	.313	.974	.287	10-24 UNC	.260	.452	1/16-20 UNF SAE-4	1/16-20 UNF SAE-4
100973	1/4 NPTF	1/4 NPTF												1/4 NPTF	1/4 NPTF
100974†	—	—			.997	—	—	—	—	—	—	—	—	—	—

NOTE: † 100974 Check Valve includes (4) #10-24 UNC x 3.25 Lg. Mounting Screws.

Cat. No.	Dimensions (In Inches)															
	"A" Port	"B" Port	C	D	E	F	G	H	J	K	L	M	N	"P" Port	"T" Port	U
100975	3/16-16UNF SAE-8	3/16-16UNF SAE-8	5.630	.630	1.500	2.380	3.000	1.060	2.130	4.250	.810	2.190	3.000	3/16-14UNF SAE-10	3/16-14UNF SAE-10	2.38