

Remote Mounted Control Valves



These 3-way/4-way, two-position directional control valves are ideal for workholding applications. Their zero-leakage design is the right choice for constant pressure applications. Their smaller size allows you to maximize usable fixture space.

To improve operator ergonomics, you can instantly position the control lever in any of 24 positions without tools. Finer adjustments are possible by loosening a locknut. Internal stops and detents along with a shaft wiper seal provide excellent contamination resistance.

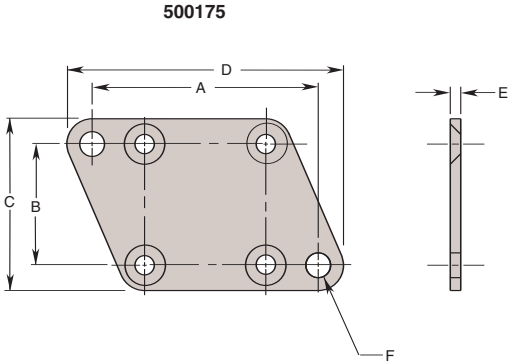
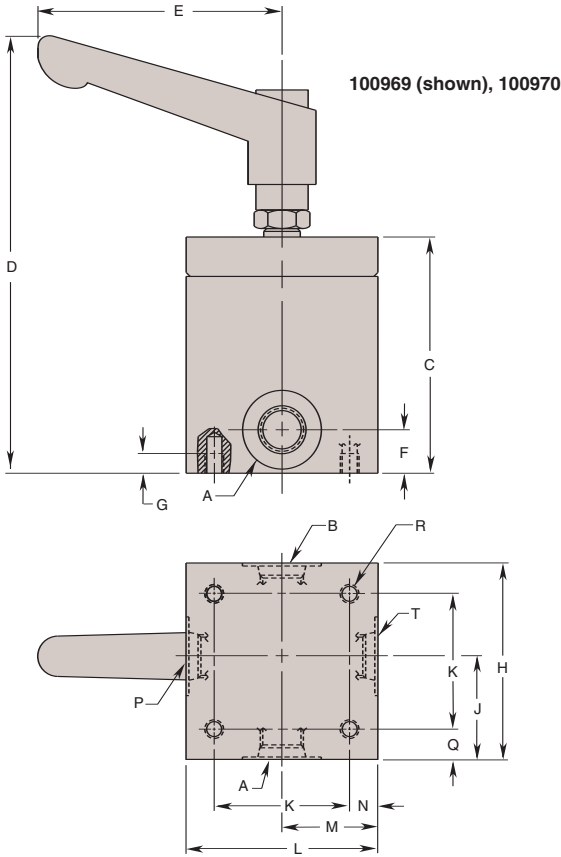
Built without check valves, these directional valves are intended **only** for systems with one valve per hydraulic pressure source.

For multiple valve applications install appro-

priate pressure ("P") and tank ("T") port check valves (page 96) or use our 100971 directional valve with 100974 check valve subplate. Ported subplates 100972 and 100973 or 2-station manifold 100975 can be added as appropriate.

Features:

- 3-way/4-way, 2-position, detented
- Single or double acting systems
- Manually operated, 90 deg. swing
- 1500 psi max. return line pressure
- Remote mounted, SAE or NPT ports
- Infinite handle adjustment
- 5,000 psi max.
- Shaft wiper excludes contaminants
- Optional mounting bracket (No. 500175)
- Single valve applications



Cat. No.	Dimensions (In Inches)					
	A	B	C	D	E	F Dia.
500175	2.565	1.375	1.948	3.138	.119	.281

Note: #10-24 UNC x .375 Lg. flat head screws (4) included.

Cat. No.	Dimensions (In Inches)														
	"A" Port	"B" Port	C	D	E Rad.	F	G Min. Thread	H	J	K	L	M	N	"P"	Q
100969	7/16-20UNF SAE-4	7/16-20UNF SAE-4	2.400	4.444	2.480	.442	.375	2.000	.947	1.375	1.948	.974	.287	7/16-20UNF SAE-4	.313
100970	1/4 NPTF	1/4 NPTF												1/4 NPTF	
															R Thread size
															"T" Port