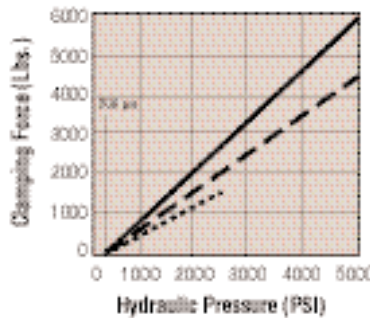


Swing/Pull Clamp - Surface Mount - Externally Plumbed - Lower Flange Style - 5000 lbs.



Features:

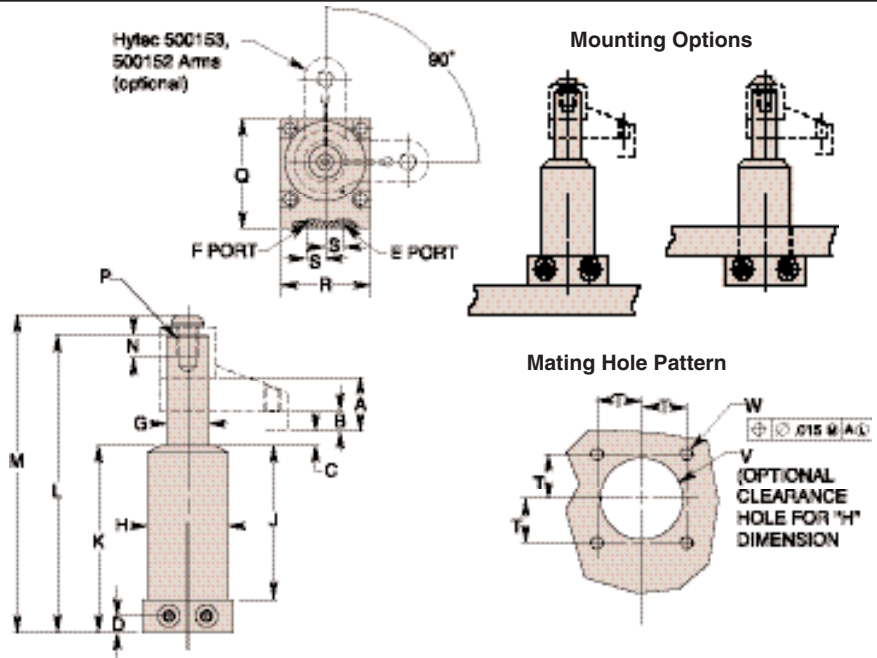
- External plumbing eliminates need to gun drill additional ports in fixture
- Can be inserted from above or below fixture plate
 - o Top mounting provides extra height to accommodate large work pieces
 - o Top mounting does not require drilling of large fixture hole
- Special rod wiper seal protects internal clamp components
- Corrosion resistant construction
- Heat treated, chrome plated piston rod
- Power-Tech® treated body and hardened cam for long wear and corrosion resistance



Performance

Clamp Nos. 110095, 110096, 110097
110098, 110099, 110100

- With Hyltec 500153 Arm (7.00' long)
- With Hyltec 500152 Arm (2.50' long)
- Straight Pull



Cat. No.	Specifications							Dimensions (In Inches)									
	Oper.	Swing Direction	*Force (Lbs.)	Eff. Area (Sq. In.)		Oil Cap. (Cu. In.)		A Total Stroke	B Clamping Stroke	C	D	E Clamp Port	F Unclamp Port	††G Dia.	H Dia.		
				Clamp	Unclamp	Clamp	Unclamp										
110095	Single-Acting	LH (Counterclockwise)	5,000	1.178	—	1.914	—	1.625	.600	.330	.500	7/16-20 UNF SAE-4	†Breather Plug 7/16-20 UNF SAE-4	1.248	2.425		
110096		RH (Clockwise)															
110097		Straight Pull															
110098	Double-Acting	LH (Counterclockwise)														2.405	3.908
110099		RH (Clockwise)															
110100		Straight Pull															

Cat. No.	Dimensions (In Inches)											
	J	K	L	M	N Thread Min.	P Thread Size	Q Radius	R	S	T	V Dia.	W Thread Size
110095	4.737	5.917	9.297	9.887	.690	%11 UNC	3.305	2.750	.570	1.085	2.442 2.462	%16-18 UNC
110096												
110097												
110098		5.730	9.110	9.700								
110099												
110100												

NOTE: * With 2.50" long arm at 5,000 psi max. operating pressure.
† Do not pressurize - single-acting only.
†† See page 59 for custom arm mounting.

Internal cam may be removed for an unguided straight pull.
See page 58 for maximum operating speeds and rotation options.