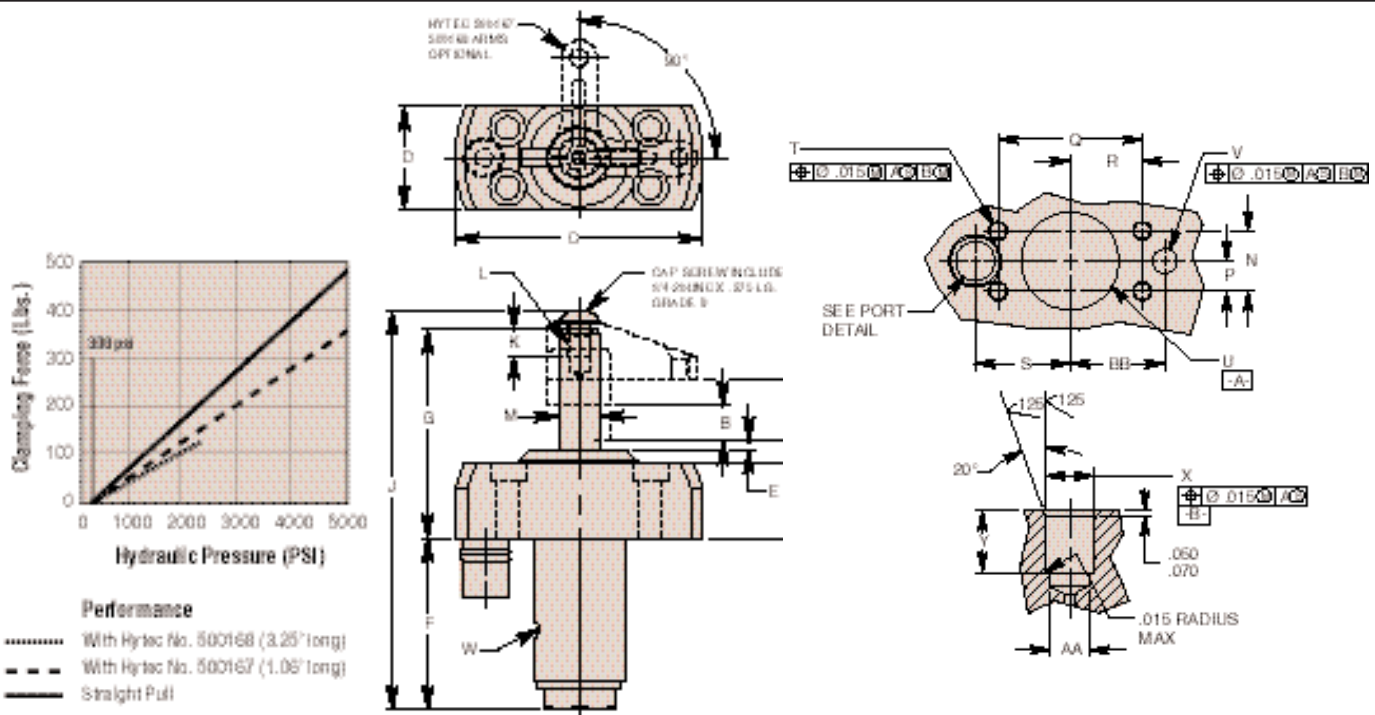


# Swing/Pull Clamp - Manifold Mount - Upper Flange Style - 365lbs.



## Features

- Unique connector bushing provides positive mating with fixture, reducing the potential for leakage or weeping.
- Simple cavity design eliminates need for threaded holes in mating surfaces
- Manifold design eliminates external plumbing and reduces fixture height
- "Live Roller" design provides industry's most reliable swing/pull mechanism
  - o Piston/Cam combination provides solid path for clamping action
  - o Typical ball and groove mechanism has higher potential for clogging and for damage from mis-aligned work pieces
- Available in single and double acting versions
- Special rod wiper seal protects internal clamp components
- Unique drainage system channels contaminants away from clamp
- Corrosion resistant construction
- Heat treated, chrome plated piston rod
- Manifold mountable
- Unique "Live Roller" swing mechanism for increased service life
- Power-Tech™ heat treated body and hardened cam for long wear and corrosion resistance
- Single- and double-acting models are dimensionally interchangeable
- Straight pull capacity 480 lbs. at 5,000 psi max.



Cat. No.	Oper.	Specifications						Dimensions (In Inches)										
		Swing Direction	*Force (Lbs.)	Eff. Area (Sq. In.)		Oil Cap. (Cu. In.)		A Total Stroke	B Clamping Stroke	C Dia.	D	E	F	G	H	J	K Min. Thd.	L Thd. Size
				Clamp	Unclamp	Clamp	Unclamp											
110007	Single-Acting	LH (Counter Clockwise)	365	.098	—	.065	—	.638	.320	2.624	1.090	.096	1.815	2.217	.805	4.229	.275	¼-20 UNC
110008		RH (Clockwise)																
110009		Straight Pull																
110010	Double-Acting	LH (Counter Clockwise)	365	.098	.248	.065	.163	.638	.320	2.624	1.090	.096	1.815	2.217	.805	4.229	.275	¼-20 UNC
110011		RH (Clockwise)																
110012		Straight Pull																

Cat. No.	Dimensions (In Inches)													
	M Dia.	N Mtng.	P Mtng.	Q Mtng.	R Mtng.	S Mtng.	T Thd. Size	U Dia.	V	W	X Dia.	Y	AA Dia. Max.	BB Mtng.
110007	††.435	.632	.316	1.510	.755	.995	10-24 UNC	1.000 1.030	—	†Vent	.500 .503	.640 .660	.481	—
110008														
110009														
110010														
110011														
110012														.995

**Note:** \* With 1.00" arm at 5,000 psi max. operating pressure.  
 † Do not pressurize - single acting only.  
 †† See page 59 for custom arm mounting.  
 Internal cam may be removed for an unguided straight pull.

See page 58 for maximum operating speeds and rotation options.  
 ††† Surface finish to be 63. Finish of 125 acceptable with concentric tool marks only. Finish area to be .500 DIA. min. centered on .250 DIA. port hole. See operating instructions for additional port details.