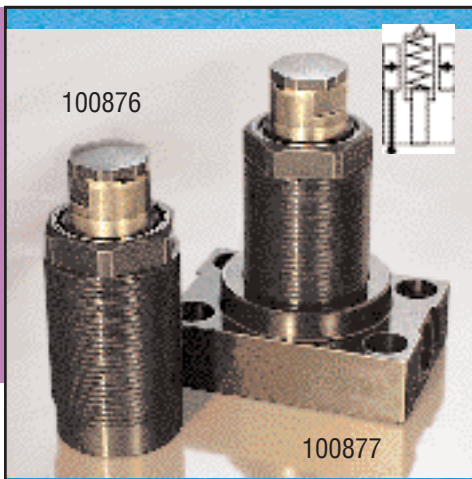


Air Advance Work Supports - 1,300 lb. Capacity

Air Advance Work Supports - 1,300 lb. Capacity



Hytec's air advance work supports have a spring return plunger which uses air pressure to extend it to contact the workpiece. To support any externally applied loads, the sleeve surrounding the plunger grips the plunger and holds it in place.

Air advance work supports allow the plunger to be retracted out of the way during workpiece load/unload operations. Applying air pressure to the work support gently raises the plunger until it contacts the workpiece. Adjusting the air pressure will vary the plunger contact force. The air pressure within the work support also serves to keep contaminants out.

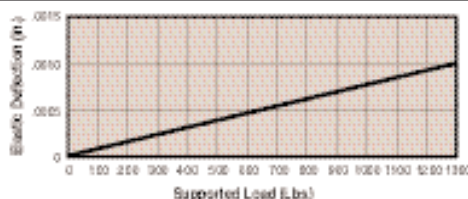
The No. 100876's threaded body may be compactly manifold mounted in your fixture or choose the No. 100877 which includes the

100876 work support and a mounting base for installation on a flat surface for conventionally plumbed circuits. Both feature fully corrosion resistant construction.

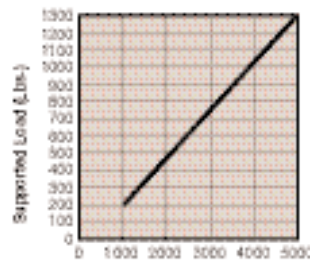
Extremely close manufacturing tolerances hold the plunger perpendicular to the workpiece and eliminates inaccuracies due to plunger movement during lock-up. After lock-up, the plunger is absolutely rigid and limits elastic deflection to .00007" per 100 lbs. of load. For base only, order number 500036.

Features:

- 1,300 lbs. capacity @ 5,000 psi max.
- Fully corrosion resistant construction
- Manifold mount or conventional base mounting
- 1,000 psi minimum recommended pressure

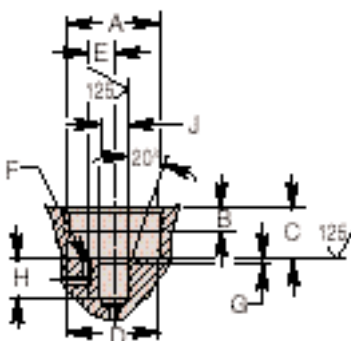


Avg. Performance
100876, 100877

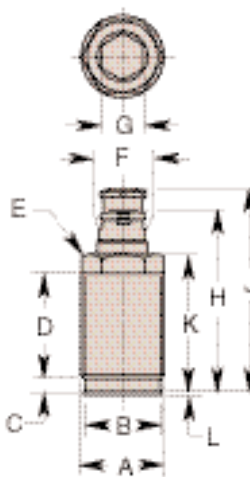


Avg. Performance
100876, 100877

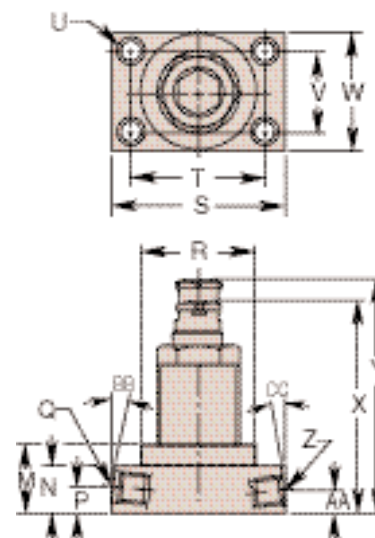
Manifold Mount Detail



100876



100877



Cat. No.	Specifications				Dimensions (In Inches)									
	*Cap. (Lbs.)	Oil Cap. (Cu. In.)	Advance System	Mounting	A Thread Size	††B Seal Dia.	C	D	E Hex	F Dia.	G Hex	Operating Range		K
												H Retracted	J Advanced	
100876	1,300	.01	Air	Manifold	1¼-16 UN	1.171	.334	1.531	1.125	.735	.688	2.850	3.162	2.180
100877		.01	Air	Base								—	—	

Cat. No.	Dimensions (In Inches)															
	L Seal	M	N	P	Q Thread Size	†R Dia.	S	T	U Dia.	V	W	Operating Range		Z Thread Size	AA	BB Port Angle
												X Retracted	Y Advanced			CC Port Angle
100876	.040	—	—	—	—	—	—	—	—	—	—	—	—	—	—	—
100877		1.000	.700	.385	7/16-20 UNF SAE-4	1.688	2.562	1.968	.281	1.188	1.750	3.162	3.474	1/8 NPTF	.330	5°

NOTE: * Based on 5,000 psi max. operating pressure. (Optional: Jam nut - pg. 59)
See page 73 for optional accessories.

† 1.768 dia. min. clearance required.
†† Seal Included.

MANIFOLD MOUNT DETAIL									
Cat. No.	Cavity Dimensions				Fluid Passage Dimensions		†Air Passage Dimensions		
	A Thread Size	B Min. Thread	C	D Dia.	E	F Dia.	G	H	J Dia.
100876	1¼-16UN	.300	.665	1.182	.343	.121	.060	.380	.375
			.675	1.196		.135		.400	.377

† Connector bushing supplied but not shown.

AIR ADVANCE WORK SUPPORT		
Cat. No.	Approximate Plunger Extension Force	
	*Air Pressure (PSI)	Force (Lbs.)
100876	15	1.4
100877	20**	3.7
	30	5.9

NOTE: * Min. air press. 15 psi, max. air press. 30 psi
** Minor air leakage may occur at or above this pressure.