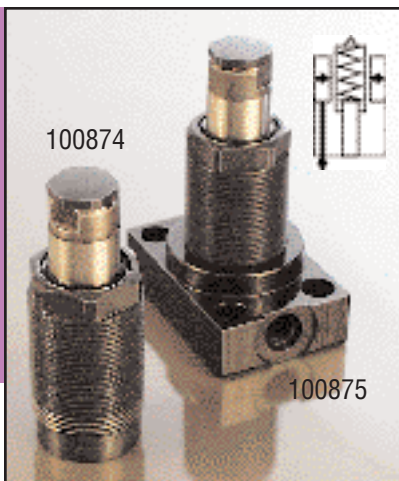


Spring Adv. Work Supports-1,300 lb. Cap.

Spring Advance Work Supports -
1,300 lb. Capacity



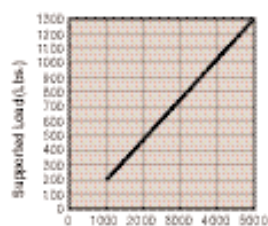
Hytec's spring advance work supports have a spring loaded plunger which contacts the workpiece as it is loaded into the fixture. The spring keeps the plunger in contact with the workpiece, allowing for variations between workpieces. To support any externally supplied loads, the sleeve surrounding the poppet grips the plunger and holds it in place.

The 100874 and 110124's threaded body may be compactly manifold mounted in your fixture or choose the 100875 or metric version 110134 which includes the 100874 work support and a mounting base for installation on a flat surface for conventionally plumbed circuits. Both feature fully corrosion resistant construction.

Extremely close manufacturing tolerances hold the plunger perpendicular to the workpiece and eliminates inaccuracies due to plunger movement during lock-up. After lock-up, the plunger is absolutely rigid and limits elastic deflection to .00007" per 100 lbs. of load. For base only, order number 500035 for conventional mounting, and 421727 for manifold mounting.

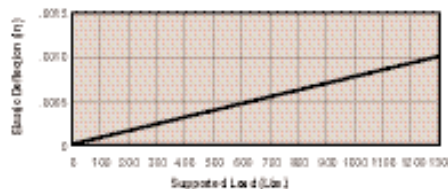
Features:

- 1,300 lbs. capacity @ 5,000 psi max.
- Fully corrosion resistant construction
- Manifold mount or conventional base mounting
- Filtered breather/rest button
- 1,000 psi minimum recommended pressure



Avg. Performance

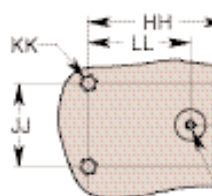
100874, 100875, 110124



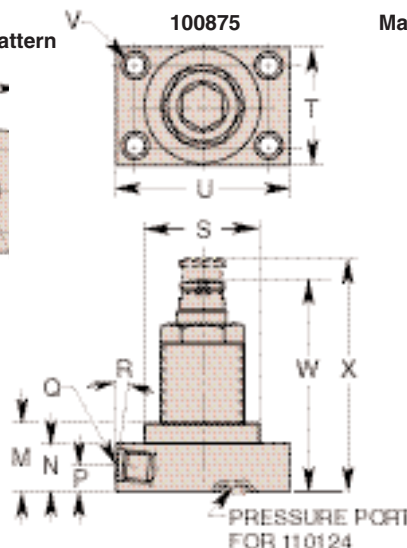
Avg. Performance

100874, 100875, 110124

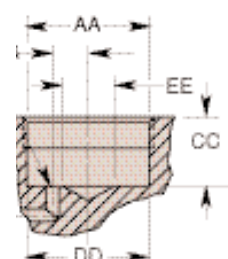
Mating Hole Pattern



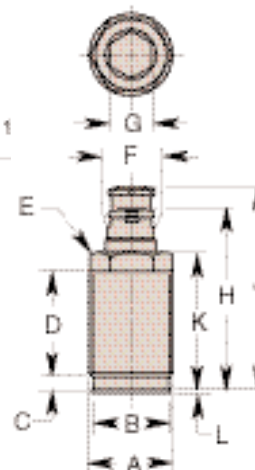
100875



Manifold Mount Detail



100874



Cat. No.	Specifications				Dimensions (In Inches)								
	*Cap. (Lbs.)	Oil Cap. (Cu. In.)	Advance System	Mounting Configuration	A	†B Seal Dia.	C	D	E Hex.	F Dia.	G Hex.	Operating Range	
												H	J
100874	1,300	.01	Spring	Cartridge Manifold	1¼-16 UN	1.171	.334	1.531	1.125	.735	.688	2.850	3.162
100875				Base Conventional		—	—	—				—	
110134				Base Manifold		—	—	—				—	
110124													

Cat. No.	Dimensions (In Inches)												
	K	L Seal	M	N	P	Q Pressure Port Thd. Size	R Port Angle	††S Dia.	T	U	V Dia.	Operating Range	
												W Retracted	X Advanced
100874	2.180	.040	—	—	—	—	—	—	—	—	—	—	—
100875	—	—	1.000	.700	.385	⅞-20 UNF SAE-4	5°	1.688	1.750	2.562	.281	3.162	3.474
110134						**M12 x 1.5 6H							
110124						—							

Cat. No.	Mounting Dimensions (In Inches)												
	AA Thd. Size	BB Min. Thd.	CC	DD Dia.	EE Drill Port Max.	FF Dia.	GG Max.	HH	JJ	KK Thd. Size	LL	MM	†††NN Pressure Port Dia. Max.
100874	1¼-16 UN	.300	.655 .675	1.182 1.196	.500	.121 .135	.343	—	—	—	—	—	—
100875	—	—	—	—	—	—	—	1.968	1.188	½-20 UNC	—	—	—
110134	—	—	—	—	—	—	—	—	—	—	1.456	.594	.126
110124	—	—	—	—	—	—	—	—	—	—	—	—	—

SPRING ADVANCE WORK SUPPORT		
Cat. No.	Approximate Forces Required To Depress Plunger (Lbs.)	
	Fully Extended	Fully Depressed
100874	2.3	2.9
100875		
110134		
110124		

NOTE: *Based on 5,000 psi max. operating pressure.
 **Per ISO 6149-1
 For optional jam nut see page 60.
 For additional flow control valves see pages 105 & 123.

For optional accessories see page 73.
 † Seal included.
 †† 1.768 dia. min. clearance required.

††† Surface finish to be 63. Finish of 125 acceptable with concentric tool marks only.
 Finish area to be .438 dia. min. centered on .126 dia. port hole.
 See operating instructions for additional details.